



### 15 YEAR WARRANTY

The **INC15ED** range of Use Class 4 ground contact fence posts and landscaping sleepers from James Jones, when used in accordance with the appropriate standards, has a 15 year warranty against failure of the timber from fungal decay or insect attack.

The warranty is for the cost of re-supply by James Jones, or the re-supply by James Jones (at our option), of a component that is proven to have failed as a result of fungal decay or insect attack within 15 years of supply. The warranty does not cover the costs of removal or reinstatement of such components or consequential costs or loss due to failure of the component. Claims must be brought within two weeks of the expiry of the 15 year period, at the latest.

The term 'fungal decay' as used in the warranty refers to wood destroying fungi that feed on and degenerate the wood cell walls. It excludes staining and mould fungi associated with the weathering of wood.

The term 'insect attack' refers to attack by wood digesting insects that destroy the timber structure.

The term 'failed' refers to damage caused by insects and/or fungi to such an extent that the component is no longer fit for purpose.

Nothing in this warranty affects the statutory rights of consumers, or excludes or restricts the liability of James Jones for death or personal injury caused by negligence, or for fraudulent misrepresentation.

### CONDITIONS

1. The James Jones **INC15ED** fence posts and landscaping sleepers must not have been misused or placed in abnormal conditions and must not have been used for any extraordinary purpose which was not drawn to the attention of James Jones or the retailer at the time of purchase.
2. Only James Jones **INC15ED** fence posts and landscaping sleepers can be used in ground contact situations - Use Class 4 (BS EN 335-1).

3. Should James Jones **INC15ED** pressure treated fence posts or landscaping timbers be cross cut, notched or bored during installation, then exposed surfaces must be liberally brushed with an appropriate end grain wood preservative to the directions shown on the product label, to protect the integrity of the treatment.
4. James Jones **INC15ED** fence posts must not be pointed after treatment.
5. The shortening of James Jones **INC15ED** fence posts should be avoided, if possible, but in any event the cut end must never be used in ground contact.
6. Any James Jones **INC15ED** pressure treated fence posts or landscaping sleepers which are further processed, eg. planed, must be returned to James Jones for re-treatment.
7. Any claim must be accompanied by proof of purchase.

### EXCLUSIONS

1. Any James Jones **INC15ED** pressure treated fence posts or landscaping sleepers supplied for use outside of European markets.
2. Any James Jones **INC15ED** pressure treated fencing posts or landscaping sleepers removed from their original installation and re-used at a new location.
3. James Jones fencing components treated to Use Class 3.2 (BS EN 335-1) are only suitable for and should only be used for out of ground contact applications. Materials treated to Use Class 3.2 are excluded from the 15 year warranty.



# Insist on **INC15ED** *years*



**James Jones**  
& SONS LIMITED

James Jones & Sons Ltd  
Broomage Avenue, Larbert, Stirling FK5 4NQ  
Tel: (01324) 56 22 41 Fax: (01324) 55 87 55  
sales@jamesjones.co.uk

[www.jamesjones.co.uk](http://www.jamesjones.co.uk)



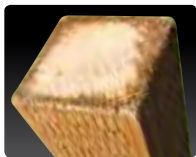
**James Jones**  
& SONS LIMITED

# Insist on INC15ED years

James Jones & Sons has extended its range of quality fencing timbers with the addition of **INC15ED** posts and sleepers. Employing incising technology used in North America for generations, James Jones offers a tried and tested solution to Use Class 4 treatment on whitewood for ground contact applications.



Consistent and uniform incisions enable a minimum of 6 mm preservative treatment penetration to meet Use Class 4 and BS8417 ground contact requirements.



Treated with next generation TANALITH E wood preservative to give a 15 year performance warranty against rot and insect attack, with a choice of TANALISED (green) or TANATONE (brown) treatment.



[www.jamesjones.co.uk](http://www.jamesjones.co.uk)

## INC15ED technology providing guaranteed performance and confidence assured.

The new **INC15ED** range of posts and landscape sleepers from James Jones gives added confidence and assurance to your next fencing or landscaping project.

Manufactured from quality whitewood, our posts and sleepers are kiln dried and incised prior to preservative treatment to Use Class 4 and covered by a 15 year warranty against decay and insect attack.

Incising technology was developed and proven with generations of use in North America, and James Jones was the first timber processor in the UK to adopt this system. Incisions along the entire length of the component create a neat yet distinctive pattern on all 4 sides. This allows preservative treatment, applied under pressure, to penetrate deeper into the structure of the timber creating a robust and uniform envelope of protection.

Our Use Class 4 treatment, as recommended for ground contact applications to BS8417, also now utilises the next generation TANALITH E 8000 – the very latest proven wood preservative from Lonza. The innovative formulation of TANALITH E 8000 incorporates its own enhanced penetration properties as well as a broader spectrum of protection against decay organisms, particularly certain copper tolerant brown rots.



The following core range of **INC15ED** fence posts are available either TANALISED (green) or TANATONE (brown) pressure treated.

Core Stock Range	INC15ED Posts
WIDTH/DEPTH	LENGTHS
75mm x 75mm	1.5m, 1.8m, 2.1m, 2.4m, 2.7m
100mm x 100mm	1.8m, 2.4m, 3.0m

(Other specifications are available on request.)



The James Jones **INC15ED** product range complements our extensive choice of quality fencing products available.

- RAILS • SLATS • RANCH & GRAVEL BOARDS
- FEATHEREDGE BOARDS

The entire James Jones fencing range is available either TANALISED (green) or TANATONE (brown) pressure treated.

**INC15ED** landscape sleepers are available in the following sections.

Core Stock Range	INC15ED Sleepers
WIDTH/DEPTH	LENGTHS
100mm x 200mm	2.4m
100mm x 225mm	2.4m
125mm x 250mm	2.4m, 2.6m, 3.0m

(Other specifications are available on request.)



## Cut & Treat

Every time pressure preservative treated timber is cut or notched during installation, the exposed surfaces must be further protected with an appropriate brush-on end grain preservative to maintain the integrity of the performance and the conditions of the warranty.



## 15 Year Warranty

All our **INC15ED** fence posts and landscape sleepers have a 15 year performance warranty.



**James Jones & Sons Limited**

